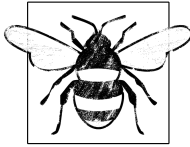


BEE SQUARED



*Helping Bees by planting
wildflower seeds*

How to plant your Bee Square

Clear an area of soil and lightly dig over.

Scatter the seeds over the area and
cover with a fine layer of soil.

Firm the soil down and water.

Keep the area moist in dry weather.

There are enough seeds in this packet
to cover an area of 1m².

Best sown in Spring and Autumn.

Establishment may take two years to Bee perfect.

Don't give up!



Look at our website and Facebook Page for more information:
www.climateactionwendover.org